

Peplink MediaFast

Lightning Fast Content Delivery. And So Much More.



MAX HD2/HD4
with MediaFast



MediaFast 500

Works with:



iTunes U



iTunes



IDEAS WORTH SPREADING

TED.com

and more...

MediaFast is our supercharged content caching and all-in-one mobile device management solution. Designed with education and entertainment in mind, it downloads and buffers video, audio, iTunes/iTunes U, HTTP, and other content for uninterrupted learning and fun anytime.

Prefetch. Off-Peak Downloads. Anytime, Anywhere Playback.

Schedule one-time or recurring content downloads during off-peak hours, and then playback downloaded content anytime. Need HD video and other content in places with spotty or congested Internet connections? Download whenever and wherever the connection is best. Then pack up and take the MediaFast anywhere you need seamless content delivery.

Reporting. Insight. On-Demand.

Check bandwidth usage and savings. Track popular URLs and file types. You can also monitor client IP addresses, find your heaviest users, and more, all from a single intuitive interface.

MDM. Complete iOS Device Control. All in One Place.*

Provision and manage iOS devices without additional gear or software tools. It's easy to track device inventory, monitor battery levels, and install or remove apps. You can even lock devices, set restrictions, and erase content, right from MediaFast.

* Coming soon.

Available in specific models or with purchase of optional license keys.

Cache. Download x1. Playback x∞.

Cache iTunes/iTunes U and other content automatically by domain and file type. With MediaFast, you can download once and play back over and over again, cutting loading time, bandwidth usage and cost. Keep content as long as you like or purge it automatically by file type and age.

SpeedFusion. Bonded Bandwidth. 24/7 Connectivity.#

Take advantage of all available connections with SpeedFusion bandwidth bonding and load balancing. Automatic failover keeps your learners learning and teachers teaching, even when a link fails.

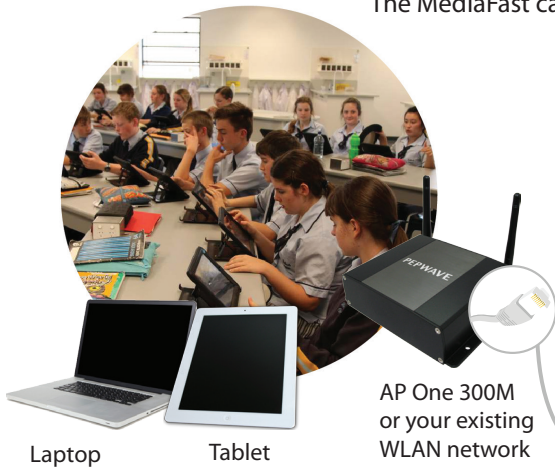
InControl 2 and AP Controller. Your Network. At Your Fingertips.

Monitor and manage routers, access points, and other connected devices with InControl 2 and AP Controller. Wi-Fi networks are easy to set up, and you get complete control over your entire wireless and wired network from any compatible web browser.

Applications

Deliver Uninterrupted, On-Demand Learning with Content Caching

- 3 Deliver cached content to students with the Pepwave AP One, and manage your content delivery network with our InControl 2 and built-in AP Controller. The MediaFast can also work with your existing WLAN network



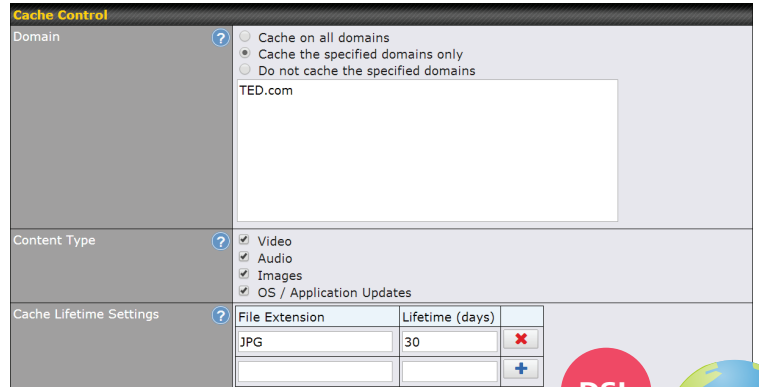
iTunes U



iTunes



TED.com



MediaFast 500

- 1 Set MediaFast to cache video, audio, HTML, and other content. You can also cache textbooks, apps, and iOS updates for use with unlimited devices

- 2 Cache content from iTunes/iTunes U, TED, and other providers

Centrally Manage and Provision iOS Devices with MDM



- 1 Log into MediaFast's management console to get iOS device details, including OS version, battery level, and available storage
- 2 Install and remove apps right from MediaFast
- 3 Set usage restrictions using MediaFast. You can also lock down or erase lost or stolen iOS devices



AirPrint



- 4 Enable AirPlay, AirPrint, and other Bonjour services, and then make them available to students on your local and extended network

Accelerate Branch/Offsite Networking with Content Prefetching

Retail



Point of Sale/
Sales Info

Digital Signage



Advertisement/
Roadshow

First Responders

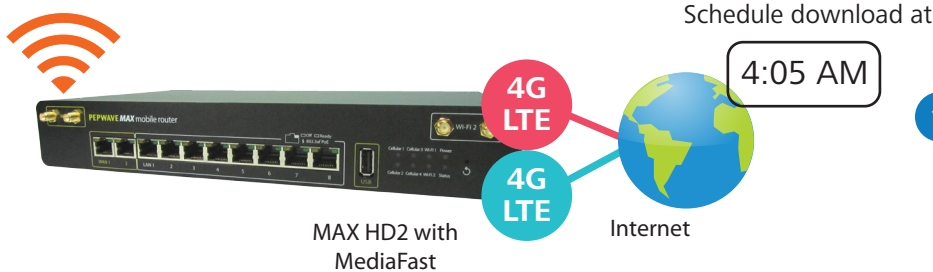


Operation
Manual

Make downloaded content available to branch offices without stressing your WAN and racking up huge peak usage bills

Take your show on the road with preloaded ads, demos, websites, and more

Provide quick, uninterrupted access to crucial intelligence in emergency and other mission-critical applications



- 1 Transfer large spreadsheets, documents, presentations, and other business assets overnight or whenever network usage is light

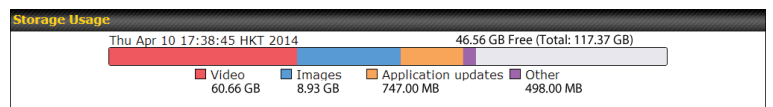
Turbocharge Existing Wi-Fi Hotspots with Cached Content

- 2 Cache content from iTunes/iTunes U, TED, and other providers

- 1 Download and store video, audio, HTML, and other content on MediaFast. You can also store textbooks and apps



Your existing
WLAN network



Bandwidth Summary

	Bandwidth Saved	Total Bandwidth	Accesses
Today	16.90 GB (18.53%)	91.22 GB	1 195
Last week	97.28 GB (10.82%)	898.90 GB	981 567
Last month	2641.26 GB (7.24%)	3648.15 GB	3 926 813
Last year	2641.26 GB (7.24%)	3648.15 GB	3 926 813

Bandwidth Details

Period: Today | 1 Week | 1 Month | 1 Year

Order: Top Hit | Top Usage | Top Visited | Top Missed

Web Domain	Bandwidth Saved	Total Bandwidth	Accesses
theguardian.com	2.61 GB (53.16%)	4.91 GB	1830
ted.com	12.52 KB (36.00%)	34.77 MB	850

- 3 Provide content anywhere using an existing Wi-Fi hotspot. MediaFast instantly drops into any wireless network and delivers uninterrupted learning and entertainment, even in low-bandwidth environments

Specifications

	Mobile Command/Vehicle/Hotspot	Branch Office/Hotspot	School/Campus		
	MAX HD2 with MediaFast	MAX HD4 with MediaFast	MediaFast 200	MediaFast 500	MediaFast 500
Product Code	MAX-HD2-MFA-LTE-*	MAX-HD4-MFA-LTE-*	MFA-200-W	MFA-500-A	MFA-500-B
Category	4G LTE + Wired		Wired Only		
WAN Interface	2x Embedded 4G LTE Modems 2 x 100/1000M Ethernet Ports 1x USB Interface	4x Embedded 4G LTE Modems 2 x 100/1000M Ethernet Ports 1x USB Interface	2x 100/1000M Ethernet Ports [‡] 1x USB Interface	5x 100/1000M Ethernet Ports [‡] 1x USB Interface	5x 100/1000M Ethernet Ports 1x USB Interface
Disk Drive	120GB SSD	120GB SSD	120GB SSD	120GB SSD	240GB SSD
LAN Interface	8 (GbE) 802.3af PoE Output	8 (GbE) 802.3af PoE Output	8 (GbE) 802.3af PoE Output	3 (GbE)	3 (GbE)
Wi-Fi Interface	1x 802.11a/n or b/g/n as WAN 1x 802.11a/n or b/g/n as AP	1x 802.11a/n or b/g/n as WAN 1x 802.11a/n or b/g/n as AP	Simultaneous Dual-Band 802.11a/b/g/n AP	○	○
Cache Throughput	150Mbps	150Mbps	150Mbps	500Mbps	500Mbps
Router Throughput	80Mbps	80Mbps	80Mbps	250Mbps	250Mbps
Video and Content Caching	●	●	●	●	●
Multi-WAN Load Balancing	●	●	○ [#]	○ [#]	●
PepVPN	●	●	●	●	●
SpeedFusion Hot Failover	○ [#]	○ [#]	○ [#]	○ [#]	●
SpeedFusion Bandwidth Bonding	○ [#]	○ [#]	○ [#]	○ [#]	●
Number of PepVPN/ SpeedFusion Peers	2	2	2	2/50 ⁺	50
InControl Cloud Management	●	●	●	●	●
AP Controller	●	●	●	●	●
Maximum No. of AP Supported	10	10	10/50 [^]	10/100 [^]	10/100 [^]
Manage Remote AP & Multiple Config Profiles	○	○	○ [°]	○ [°]	○ [°]
Operating Temperature	-40° – 149°F (-40° – 65°C)		32° – 104°F (0° – 40°C)		

* MAX HD2 and HD4 with MediaFast is available in different configurations. Please refer to ordering information for details. [‡] Only WAN 1 is activated. With purchase of optional Load Balancing or SpeedFusion Bonding license key, you can activate WAN 2 in MFA-200-W and WAN 2-5 in MFA-500-A. [#] Available as optional features. ⁺ MFA-500-A supports 2 PepVPN peers. With purchase of optional SpeedFusion License, MFA-500-A can connect to up to 50 SpeedFusion peers. [^] All MediaFast devices come with free license to manage 10 Pepwave AP devices. With purchase of optional AP Controller license, MediaFast 200 and MediaFast 500 can manage up to 50 and 100 Pepwave AP respectively. [°] All MediaFast come with AP Controller Standard, which supports one configuration profile with multiple SSIDs, meaning that all APs will share the same configuration, and you can only manage APs on the local physical LAN. Extra license upgrade to AP Controller Pro is required to support multiple configuration profiles with multiple SSIDs, and you can manage remote APs outside the local physical LAN.

Ordering Information

MAX HD2 with MediaFast

Product Code	Carrier	Embedded Modem	4G Bands/Frequencies (MHz)	3G Bands/Frequencies (MHz)
MAX-HD2-MFA-LTE-US-T	LTE Band 13/Sprint/AT&T	2	4GLTE: B2/1900, B4/AWS, B5/850, B13/700, B17/700, B25/1900	WCDMA/HSDPA/HSUPA/HSPA+/DC-HSPA+: B1/2100, B2/1900, B4/AWS, B5/850, B8/900 EV-DO Rev.A: BC0/800, BC1/1900, BC10/1700
MAX-HD2-MFA-LTE-E-T	4G LTE/HSPA+	2	4GLTE B1/2100, B3/1800, B7/2600, B8/900, B20/800	WCDMA/HSDPA/HSUPA/HSPA+/DC-HSPA+: B1/2100, B2/1900, B5/850, B6/800, B8/900

MAX HD4 with MediaFast

Product Code	Carrier	Embedded Modem	4G Bands/Frequencies (MHz)	3G Bands/Frequencies (MHz)
MAX-HD4-MFA-LTE-US-T	LTE Band 13/Sprint/AT&T	4	4GLTE: B2/1900, B4/AWS, B5/850, B13/700, B17/700, B25/1900	WCDMA/HSDPA/HSUPA/HSPA+/DC-HSPA+: B1/2100, B2/1900, B4/AWS, B5/850, B8/900 EV-DO Rev.A: BC0/800, BC1/1900, BC10/1700
MAX-HD4-MFA-LTE-E-T	4G LTE/HSPA+	4	4GLTE B1/2100, B3/1800, B7/2600, B8/900, B20/800	WCDMA/HSDPA/HSUPA/HSPA+/DC-HSPA+: B1/2100, B2/1900, B5/850, B6/800, B8/900

Features

WAN

Support for PPPoE, Static IP, DHCP
WAN Link Health Check
Bandwidth Allowance Monitor
USB 4G LTE/3G Modem Support
Support for Dynamic DNS Services
IPv6 Support

LAN

DHCP Server for LAN Clients
Extended DHCP Options
DHCP Reservation
DNS Proxy for LAN Clients

DNS[#]

Built-in Authoritative DNS
Support for A, CNAME, NS, MX, PTR, SOA, SRV, TXT Records

Advanced QoS

User Groups
Bandwidth Reservation^{*}
Individual Bandwidth Limit
Application Prioritization
By User Groups
SIP, HTTPS, VPN QoS
Custom Application QoS

Caching

Video Caching
iTunes
iTunes U
TED.com
Content Caching
HTML
JavaScript
Image
Flash Application

Networking

NAT and IP Forwarding
Static Routes
Port Forwarding
Many to One, One to One NAT
NAT Pool
SIP ALG, H.323 ALG
UPnP, NAT-PMP
WINS Server
OSPF and RIPv2 support^{*}

AP Controller

Support for Pepwave AP Series
Auto AP Discovery
Auto AP Firmware Management
AP Profile Configuration
Wi-Fi usage statistics

Load Balancing^{*}

Intelligent Failover
Session Persistence
Per-Service Load Distribution
Multiple Algorithms

Complete VPN Solution^{*}

PepVPN/SpeedFusion
Site-to-Site VPN
Bandwidth Aggregation
Intelligent Failover
256-bit AES Encryption
Pre-shared Key Authentication
Dynamic Routing
PPTP VPN Server
RADIUS, LDAP Authentication
IPsec VPN (Network-to-Network)

Device Management

Web Administrative Interface
Command Line Interface
InControl Cloud Management
Router Utility Mobile App
Email Notification
Active Client & Session Lists
Bandwidth Usage Statistics
Syslog Service
SNMP v1, v2c and v3

Security

Stateful Firewall
DoS Prevention

^{*} Specifications vary across different models. For the most updated specifications, please refer to our website.



United States
T: +1 (650) 450 9668
E: sales@peplink.com

www.peplink.com

©Peplink. All rights reserved. Peplink, the Peplink logo, and SpeedFusion are trademarks of Peplink International Ltd. Other brands and product names are trademarks or registered trademarks of their respective holders. All specifications are subject to change without notice.