



ALLNET

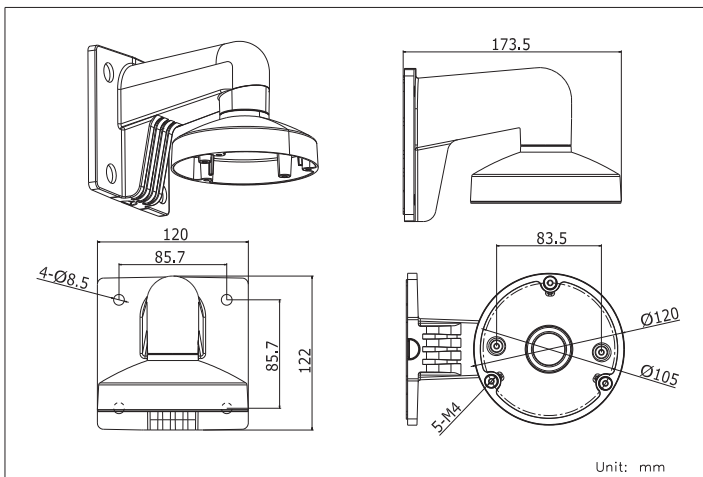
ALL-CAM2388-LVE-Wallmount

Ø120 Wall Mounting Bracket for Mini Dome Camera

- Aluminum alloy material with surface spray treatment
- Waterproof rubber suits for indoor/outdoor design
- The outlet hole makes the feature looks better
- Better water proof as nose-up pitch design
- Matched junction box has the waterproof stopper

Art. Nr. 123688

Dimension



Order Model

ALL-CAM2388-LVE-Wallmount

Parameter

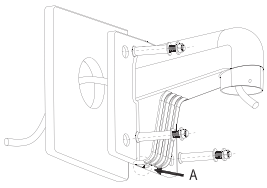
Model	ALL-CAM2388-LVE-Wallmount
Parameters	Ø120 Wall Mounting Bracket for Mini Dome Camera
Appearance	White
Range of Application	Suitable for dome camera wall mounting
Material	Aluminum Alloy
Dimension	Ø120×122×173.5mm
Weight	440g

Notice

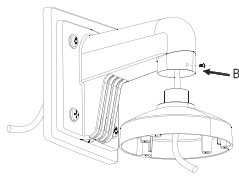
- The bracket should be installed on flat wall
- Waterproof rubber is necessary for outdoor application
- The wall must be capable of supporting over 3 times as much as the total weight of the camera and the mount.
- The maximum load capacity of the bracket is 4.5KG

Installation steps:

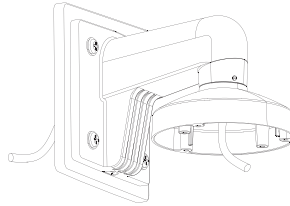
① Choose the appropriate wall and thread the wire



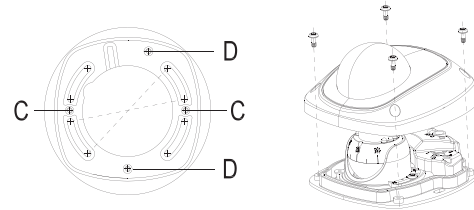
② Fix the adapter to bracket and thread the wire



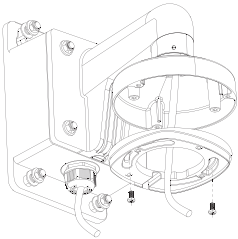
③ Screw up and fix the adapter



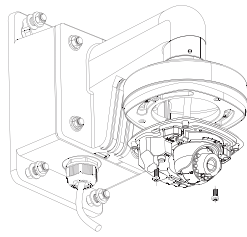
④ Get off the transparent cover and check the hole site of adapter plate



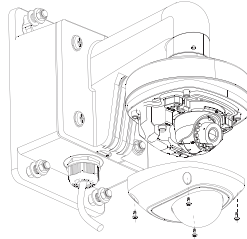
⑤ Install the adapter to the bracket and screw up



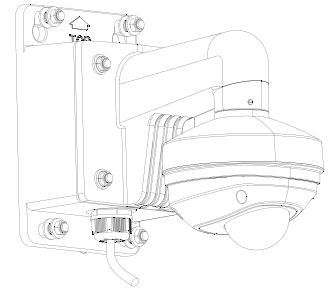
⑥ Connect the camera wire and fix the camera onto the adapter plate



⑦ Modify the angle of monitoring, install the transparent cover and screw up



⑧ Bracket installation complete.



Note: The actual bracket may vary from the picture above.