

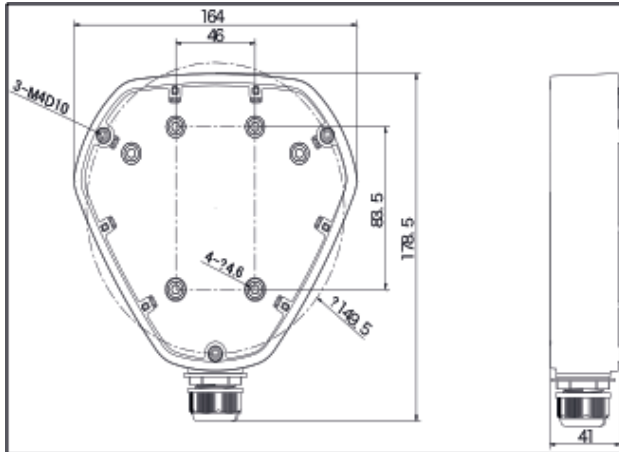
## **ALLNET** **ALL-CAM2385\_zbh.\_Junction**

### **Wall Mounting Bracket for Mini Dome Camera (with Junction Box)**

- Aluminum alloy material with surface spray treatment
- Waterproof design
- Cable hole on bracket makes the feature better

**Art. Nr. 121155**

## Dimension



## Order Model

ALL-CAM2385\_zbh.\_Junction

## Parameter

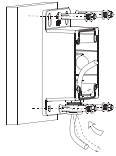
Model	ALL-CAM2385_zbh._Junction
Parameters	Junction Box for Dome Camera
Appearance	White
Material	Aluminum Alloy
Dimension	178.5×164×41mm
Weight	340g

## Notice

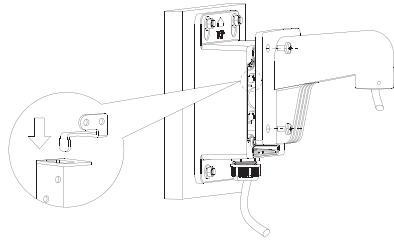
- The bracket should be installed on flat wall
- Waterproof rubber is necessary for outdoor application
- The wall must be capable of supporting over 3 times as much as the total weight of the camera and the mount.
- The maximum load capacity of the bracket is 4.5KG

## Installation Step

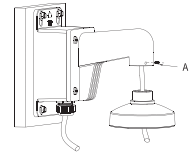
- ① Choose the appropriate wall and thread the wire through the waterproof stopper



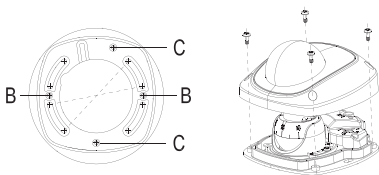
- ② Fix the bracket to junction box, thread the wire and screw up



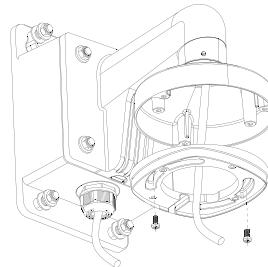
- ③ Install the bowl to the bracket and fix with fastening screw



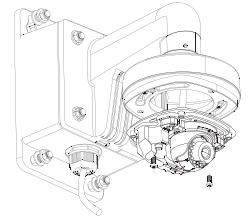
- ④ Get off the transparent cover and check the hole site of adapter plate



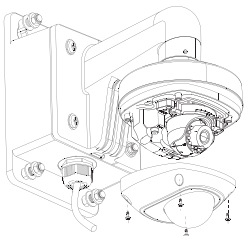
- ⑤ Install the combination to the bracket and complete the installation



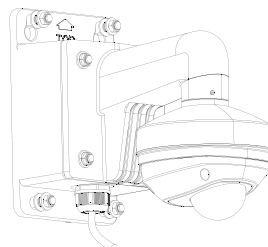
- ⑥ Connect the camera wire and fix the camera onto the adapter plate



- ⑦ Modify the angle of monitoring, install the transparent cover and screw up



- ⑧ Bracket Installation complete.



**Note:** The actual bracket may vary from the picture above.